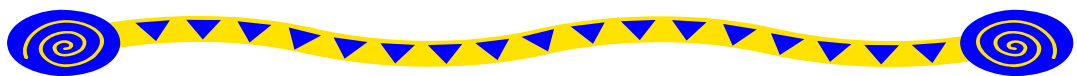


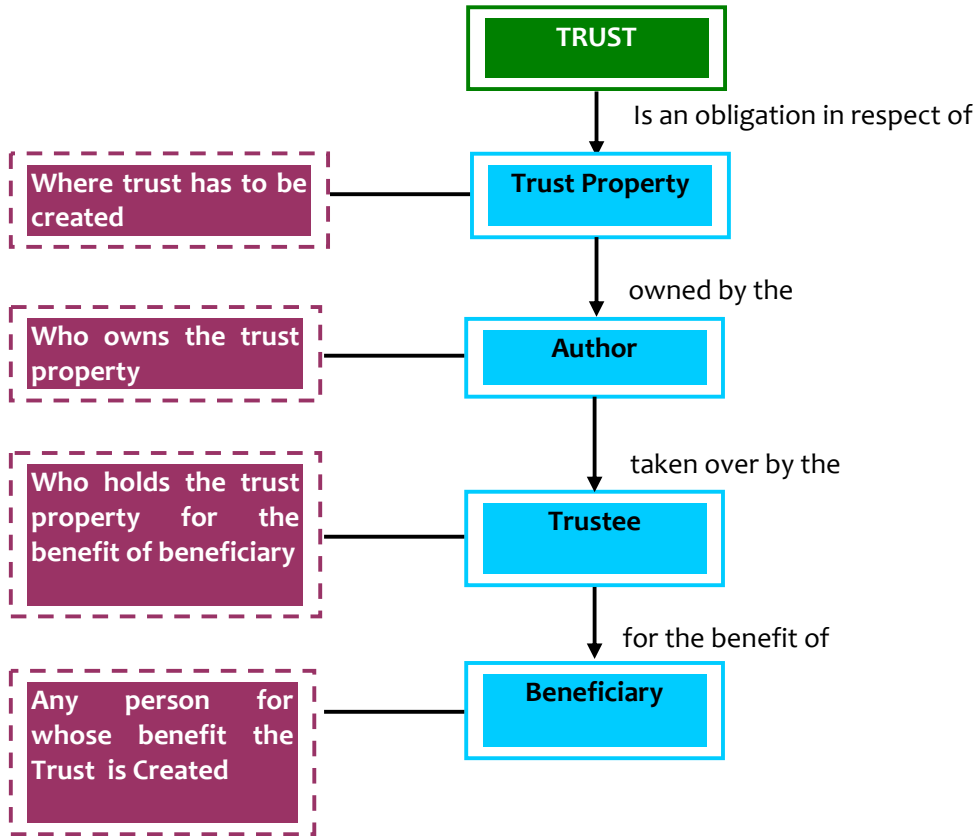
# STEPS FOR FORMATION OF A CHARITABLE TRUST



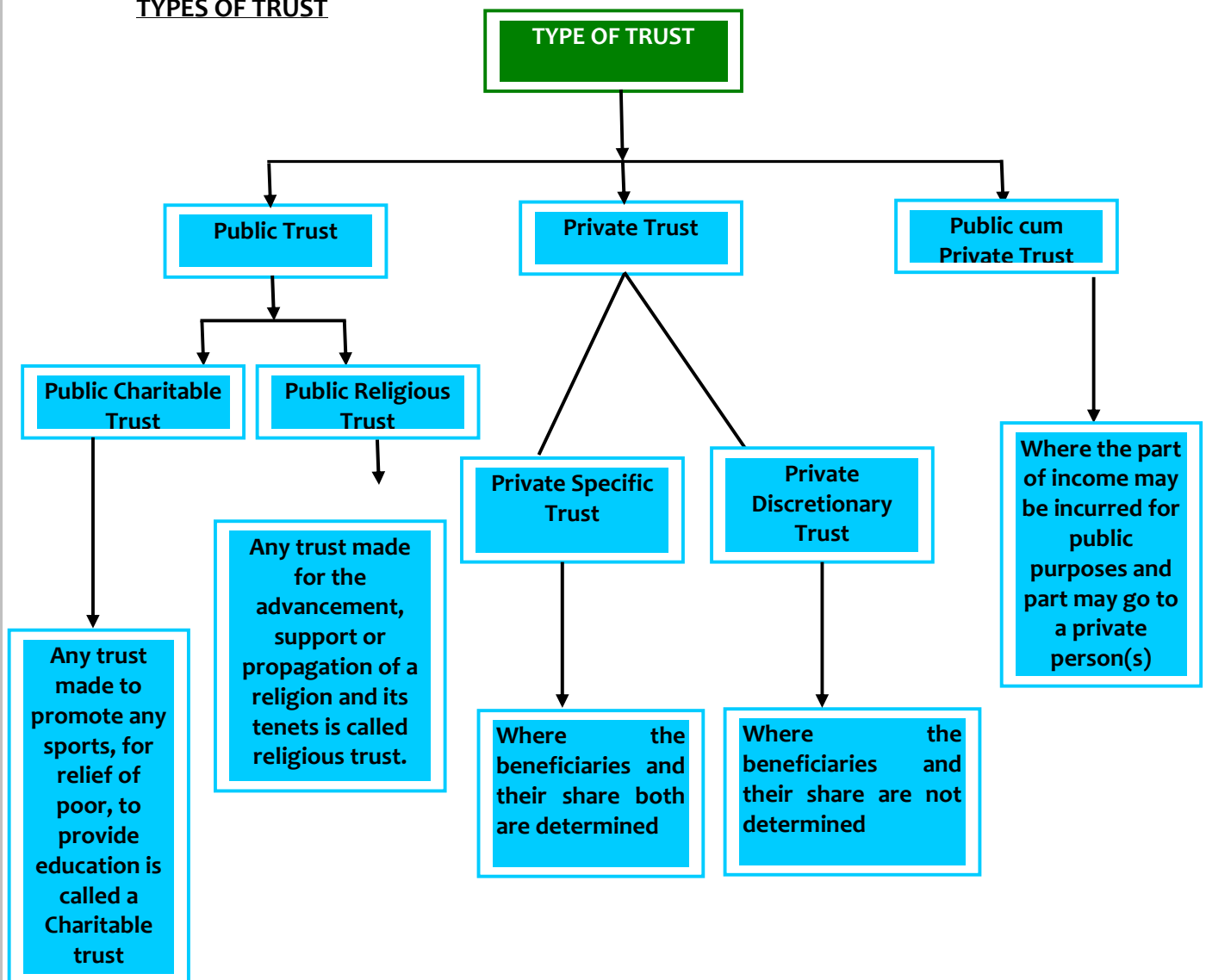
## **INDEX**

TRUST .....	2
TYPES OF TRUST .....	3
BENEFITS OF TRUST .....	4
CREATION OF TRUST .....	5
REGISTRATION OF CHARITABLE TRUST.....	6

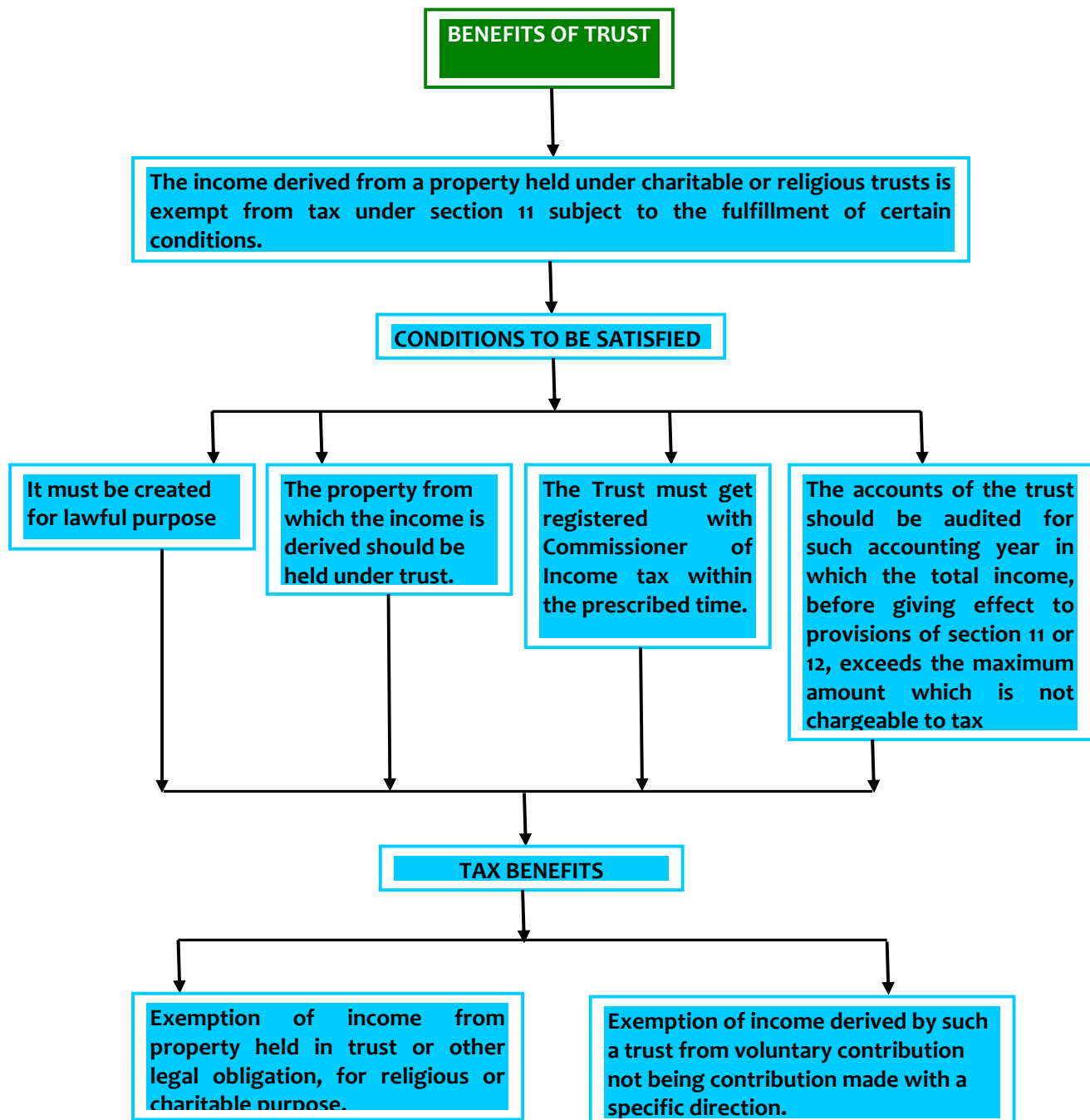
# TRUST



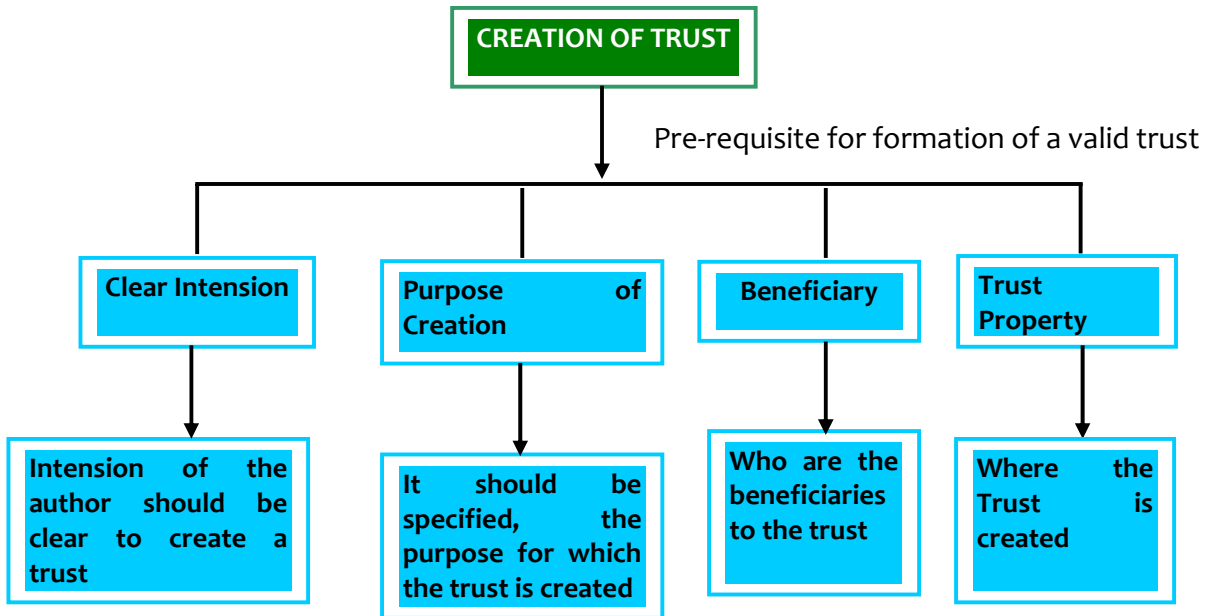
## TYPES OF TRUST



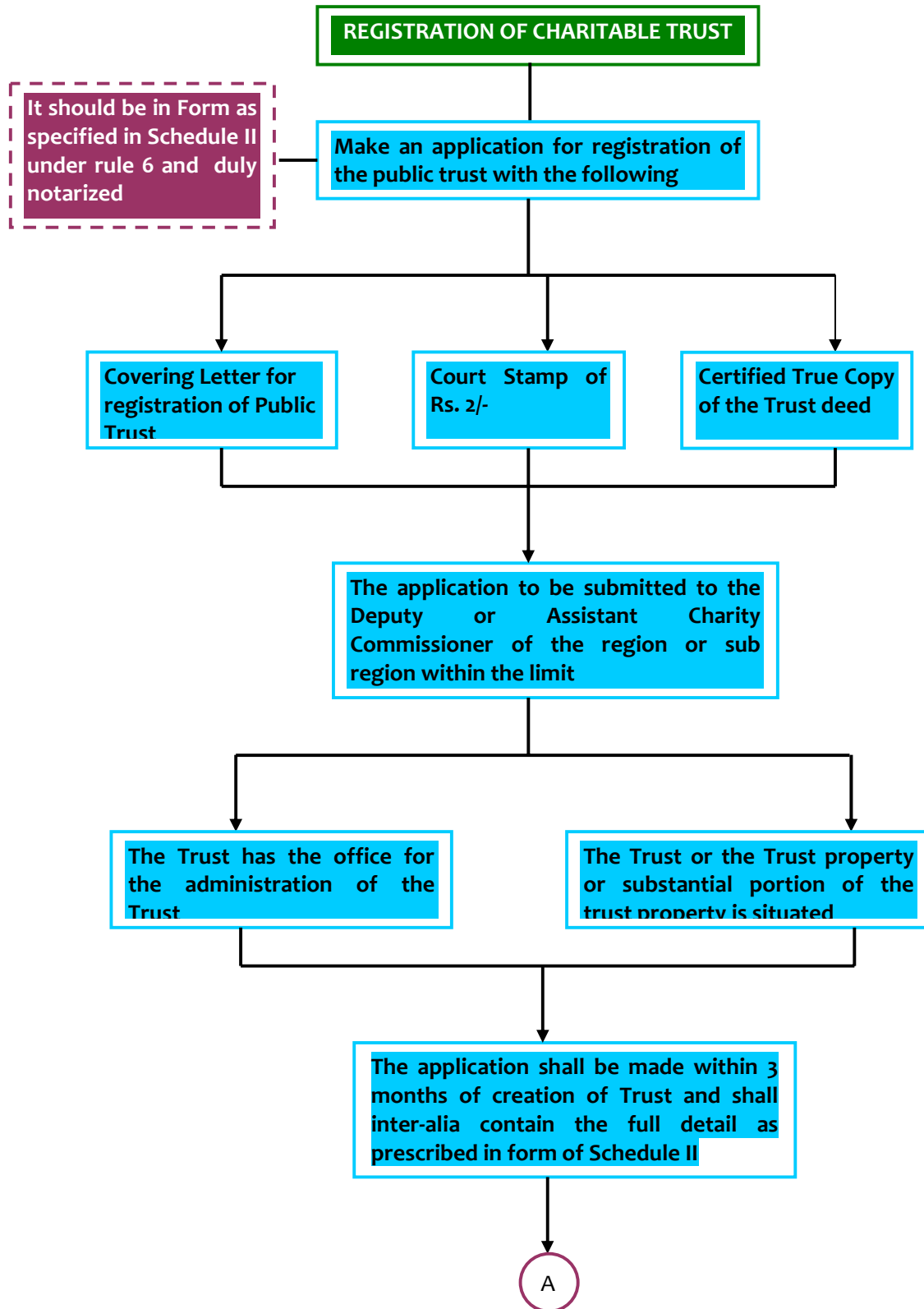
## BENEFITS OF TRUST



## CREATION OF TRUST



## REGISTRATION OF CHARITABLE TRUST



A

Every application made under subsection (1) shall be signed by the trustee or his/ her agent duly authorised

To be submitted to the Deputy or Assistant Charity Commissioner of the region, who on receipt of the application

Return the Application to the Trustee

In case the application is incomplete in respect of any particular Trustee

Does not disclose full particular of the Public Trust Trustee

Approve the application and endorse a certificate containing the word 'Registered' together with number and page of the book in which the document has been copied and forward the same to the trustee

Issuance of Certificate of Registration in the prescribed format

END